

A stylized world map in shades of blue and teal serves as the background for the title. The map is centered on the Atlantic Ocean, with the continents of North America, South America, Europe, Africa, Asia, and Australia visible.

# *INTERNATIONAL STUDENT GUIDE*

MONSU Peninsula acknowledges the Traditional Owners of the Land, the Bunurong people, of the Kulin Nation. We pay our respects to Elders past & present, & extend our respect to all Elders & Aboriginal & Torres Strait Islander peoples across Australia.

# EAT

## FRANKSTON



**Vietnamese**  
**Nha Trang Restaurant**  
477 Nepean Hwy,  
Frankston VIC 3199



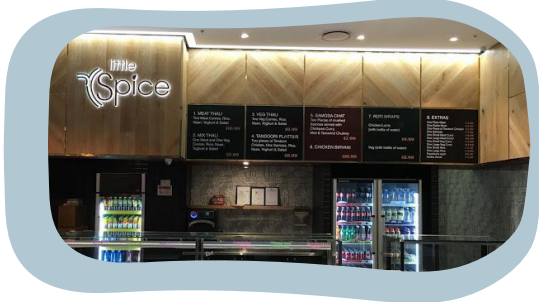
**Chinese**  
**Heatherhill Asian kitchen**  
48B Heatherhill Rd,  
Frankston VIC 3199



**Japanese**  
**Okami All You Can Eat**  
1/151 Beach St,  
Frankston VIC 3199



**Italian**  
**La Porchetta**  
436 Nepean Hwy,  
Frankston VIC 3199



**Indian**  
**Little Spice**  
near Schnitz, Bayside Shopping  
Centre, Shop Go47, Ground,  
28 Beach St, Frankston VIC 3199



**Thai**  
**Somjai Thai Kitchen**  
7 Wells St,  
Frankston VIC 3199

# EAT

## FAMOUS RESTAURANTS IN MELBOURNE



**Indian**  
**Babu Ji**  
4/6 Grey St,  
St Kilda VIC 3182



**Italian**  
**Topolino's**  
87 Fitzroy St,  
St Kilda VIC 3182



**Hong Kong style**  
**Pacific Seafood BBQ House**  
Richmond: 8/240 Victoria St,  
Richmond VIC 3121  
South Yarra: Shop 1/210 Toorak Rd,  
South Yarra VIC 3141



**Italian dessert**  
**Brunetti Classico**

380 Lygon St,  
Carlton VIC 3053



**Italian dessert**  
**Pidapipó**

299 Lygon St,  
Carlton VIC 3053



**Italian dessert**  
**7 Apples Gelato**

Chadstone: 1341 Dandenong Rd,  
Chadstone Shopping Centre,  
New food court area outside Nando's  
Chadstone VIC 3148  
St Kilda: 75 Acland St,  
St Kilda VIC 3182

# SUPERMARKETS

**Woolworths:**

Digital catalogue updates on every Wednesday

**Coles:**

Catalogue available online, sales renew every Wednesday

**Aldi:**

Cheaper prices with home-brand products



**IGA:**

Convenient but not wide range of choices



**Asian Supermarket:**

**Asian food**

TANG - The Asian Food Emporium  
185 Russell St, Melbourne VIC 3000



# ENTERTAINMENT

## BEACHES



### **Frankston Beach**

The nearest beach to our Peninsula campus!



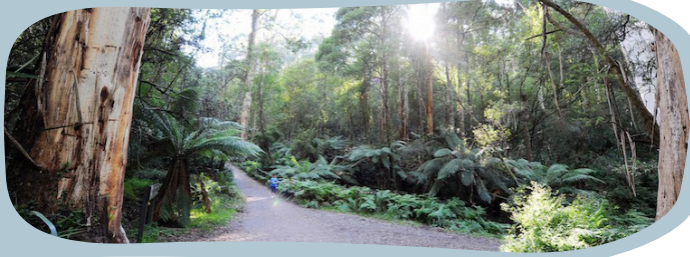
### **St Kilda Beach**

One of the most famous beaches in Melbourne. There is Luna Park and many delicious restaurants around the beach!



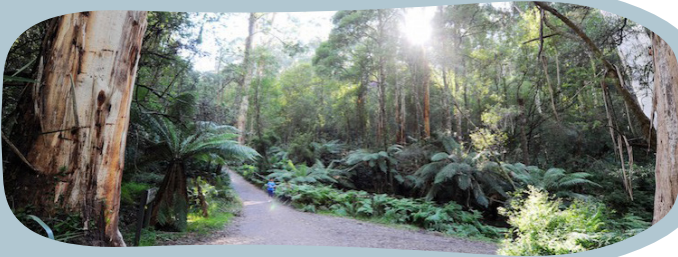
### **Brighton Beach**

Colourful bathing boxes along the beach. It's a "instagrammable" place!



### **Kokoda Track Memorial Walk (1000Steps)**

One of the most famous hiking sites with beautiful views



### **Dandenong Ranges**

Escape from the busy city life into a lush haven of hidden delights in the Dandenong Ranges' secret fern glades, towering forests and eclectic villages.



### **Arthurs Seat**

A good spot to look at the view of the Peninsula area.  
There is cable service that you can go to the site seeing spot.



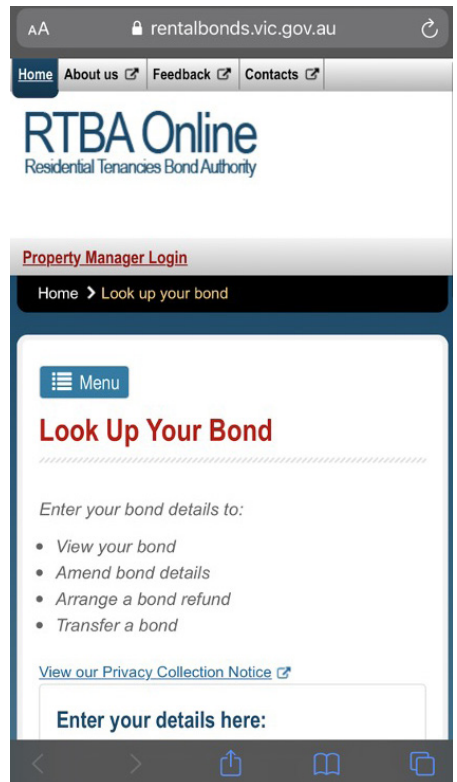
# LIVING

## Accommodation options:

1. University residential service ( Gillies Hall/ Student Village)
2. Rent a house/ apartment
3. Sharehouse
4. Homestay.

## How to rent a house?

1. Via agent
2. Get the bond receipt **from RTBA**  
(means government will hold your bond, so you are protected by law)
3. Check carefully the ingoing condition report & take photos of any damaged areas
4. **1-year contract** is the usual standard contract.  
Rent should be paid monthly
5. MONSU have accommodation support to all of you. Just come to the office and let us know your difficulties



# TRAVEL

## public transport:

1. Train
2. Tram
3. Bus



PTV app is useful to track the real time situation

Myki travel pass → international students get 50% on the yearly plan through WES/ Monash Connect

# BANKING



You can enjoy student account and remember to bring your passport, valid Australian phone number, Confirmation of Enrolment (CoE), Visa, student ID, proof of address (if you have).

# MOBILE NETWORK



OPTUS



Others: Coles/Woolworths/ALDI mobile etc.

# MEDICAL SERVICES

**(a)** GP (general Practitioner) → 1. No need further referral → treatment → give medical list ( if needed), if there are any prescribed medications, get the prescription to chemists → get the medications

**OR** 2. Referral → Hospital specialists

**(b)** Emergency Department → treatment

## Mental Health Support

Monash provides mental health counselling services and programs to students

### Mental Health Support

Monash provides mental health counselling services and programs to students

### Mental health emergencies

- Emergency services 000
- Campus security – Tel: 9905 3333 or dial 333 from a Monash phone.

### Phone counselling open 24/7

**\*Free and confidential** for Monash students and staff In Australia

Call: 1300 STUDENT (1300 788 336)

### Outside Australia

Call +61 2 8295 2917

Face to face counselling is available (During Covid period, please check online to see the latest news regarding restrictions)

You can get more information from

<https://www.monash.edu/health/mental-health>

We, as a part of MONSU Peninsula, are always supporting you.

You are always welcome to have a chat with us!

# INTERNATIONAL STUDENT SUPPORT



Subscribe to their International student Newsletter or follow their Facebook: **City of Melbourne :: International Students** to receive updates of fun events for international students happening in Melbourne.



**Council of International  
Students Australia**



**VicWISE** is an organisation that champions the employability and career development of international students and advocates for them across Australia & offshore by supporting, connecting, engaging with stakeholders, government bodies, and prospective employer groups.



**The Couch International Student Centre** is a safe and free lounge space in Melbourne for international students to socialise, relax, study, and seek assistance.

**Lighthouse Support**

**Lighthouse Support International Student Directory** is the place for you to find information on all these topics as well as food and essentials, health and wellbeing, accommodation, employment, and more.

Hi everyone!

This is Angela and my pronouns are she/her. I'm in my 4th year of Bachelor of Occupational therapy and I'll be one of your international officers in 2022.

In 2022, we are very excited to welcome all first year's and returning international students overseas (back) to Monash Peninsula. In regards to the excitement, your international officers, Hetvi and I, will be committed to bring you plenty of fun and lively in-person events while continuing with our online events to make sure students who have not arrived in Melbourne is not left out.



In addition, we will organise workshops to help with common concerns international students would have such as tax help, rental rights, and English proficiency test to enable international students better enjoy their uni life in Australia.

We'll also be recruiting more passionate fellas to join the monsu international community to be involved in planning and helping out with our activities in 2022.

**Follow our socials IG @iss\_monsupeninsula FB ISS Peninsula to stay up to date with our latest information!**

**Angela Chan**

**International Student Officer 2022**

**E: [international@monsupeninsula.org.au](mailto:international@monsupeninsula.org.au)**



My Name is Hetvi and I am in my 3rd year studying Physiotherapy. Whenever I am on campus you would find me either in the library studying or attending the on campus events and meeting new people.

I love sports (especially hockey, basketball, and badminton). I also love cooking and exploring new cafes/restaurants and trying different cuisines.

I am most excited to meet all the new international student in 2022 and generally very keen for all the fun events that are going to happen and ensuring that you guys all have the best uni experience.



**Hetvi Gudhka**  
International Officer

**Looking forward to meeting you guys and feel free to come say "Hi"!**

**Hetvi Gudhka**

**International Student Officer 2022**

**E: [international@monsupeninsula.org.au](mailto:international@monsupeninsula.org.au)**



# MONSU CARD 2022

ACCESS FRANKSTON'S FUN, FOODIE & CULTURAL EXPERIENCES



## WHAT DO I GET?.....

A MONSU Card gets you access to a world of sweet treats, crazy discounts, legendary status & more to ensure that your campus experience is a fun one!

When you sign up for a MONSU Card, you get to enjoy plenty of perks like:

- ★ Club membership discounts\*
- ★ Discounted MONSU tickets\*
- ★ Exclusive VIP offers & promos\*
- ★ On & off campus perks\*
- ★ Member only sweet treats\*

(\*Of course, T&C's will apply to each offer)

**+ HEAPS MORE!**

**GET YOUR MONSU CARD TODAY! >>>**

**[MONSUPENINSULA.ORG.AU](https://MONSUPENINSULA.ORG.AU) / [GETINVOLVED](#) / [MONSUCARD](#) /**

**BOOST**

BOWL'D

**Centenary Park**  
GOLF COURSE

*Commonfolk*

DAVA  
THAI  
TOWERHILL

DE'GANT™

**EXCAPE**  
Escape rooms

**FRANKSTON**  
Enjoy EVERY MOMENT

**UNOU**  
Ice Cream & Gelato

**goodcitizens®**  
Untrash the planet™

**MONASH SPORT**

**McClelland**  
SCULPTURE PARK • GALLERY

MR.  
FRANKIE

THE CAMPUS  
**Bookstore**

**The Hop Shop**  
BAR AND BOTTLESHOP

**VERO**  
PASTA • WINE

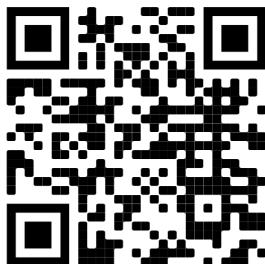
**ZERO<sup>co</sup>**

# FOR MORE INFO...

## Frankston City Guide



Scan this QR code for more exciting events in Frankston!

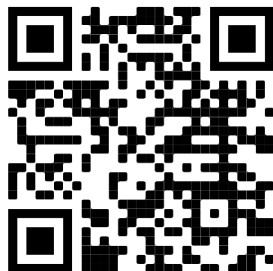


Don't forget to follow the ISS socials for more updates!

Instagram:



Facebook:





*www.monsupeninsula.org.au*



**/MONSUPENINSULA**



**/MONSUPEN**



**/MONSU-PENINSULA**

